



Poultry Nutrient Management Grant: An Overview



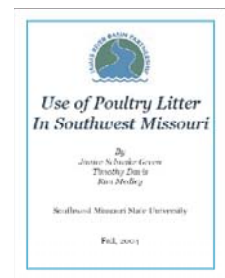
Nutrient Management Workshop
Crowder College • Jan 13, 2005

This project is helping to create a greater understanding of poultry nutrient management in SW Missouri. Through this advanced understanding, this project will improve nutrient management in SW Missouri by encouraging economical use of available nutrients without producing harm to the aquatic ecosystems in the region.

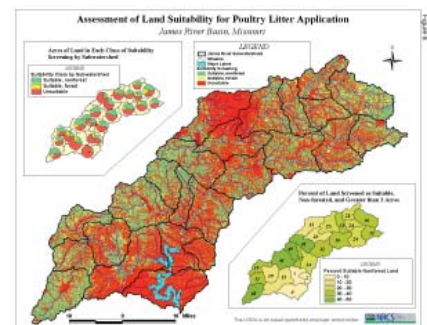
This project began in Fall of 2003; will conclude in Spring of 2006, and has produced the following:

1. Public Perception of Poultry Litter in Southwest Missouri

Over 400 farmers in Southwest Missouri were surveyed on the benefits and barriers of using poultry litter as a nutrient source. Results of this survey concluded availability and convenience of getting litter to the farm was the greatest barrier



2. Poultry Litter Land Suitability Assessment When utilizing poultry litter as a nutrient source there are specific requirements that should be followed to reduce nutrient loss. An assessment of land suitability in the James River Basin for application of poultry litter was completed using geographical and spatial techniques by partnering agency NRCS.



3. Poultry and Poultry Litter Production in Southwest Missouri

The James River Basin Partnership worked closely with Poultry Companies to generate a current and accurate report of poultry and poultry litter production in Southwest Missouri.



4. Nutrient Management Planning Workshops The James River Basin Partnership is currently hosting nutrient management planning workshops. These workshops are designed to give landowners useful information about water quality, utilizing poultry litter and implementing nutrient management plans on their farms.



5. Nutrient Management Plans Participants of Nutrient Management Workshops will receive a \$50.00 incentive if they proceed with obtaining a nutrient management plan for their farm and James River Partnership will pay 100% of cost of their soil test. The James River Basin Partnership and partners are currently writing nutrient management plans for landowner's farms. Currently over 37 plans have been completed.



Partners:



1



2

1 The U.S. Department of Agriculture (USDA) is an Equal Opportunity Employer.

2 University of Missouri Extension does not discriminate on the basis of race, color, national origin, sex, sexual orientation, religion, age, disability or status as a Vietnam-era veteran in employment or programs.

For complete project info visit our website
www.jrbp.missouristate.edu
or call 1-888-924-WATER to request information